

# Completely Renovated Home! Partial Lake & Mountain Views!

\$384,900.  
380 Summit Drive

Virtual Tours  
Photos &  
More at  
[chris-martin.ca](http://chris-martin.ca)

When Only  
The Best  
Will Do



Spectacular home with partial lake and mountain views. This wonderful 3 bedroom and 3 bathroom home, located in desirable Long Lake Heights, boasts an open floor plan with a separate family room and a living room complete with a gas fireplace. The next lucky owner of this very bright home will enjoy endless renovations such as new thermal windows, new flooring and new interior and exterior paint. There are also new plumbing and lighting fixtures, new kitchen and bathroom counters, new backsplash and a new fiberglass kitchen sink. The kitchen provides many wooden cabinets, stainless steel appliances, a pantry and an eating nook. There is a nearby dining room with new sliding glass door providing access onto a sun drenched patio with adjoining covered deck complete with new vinyl decking and glass railings. This spacious deck

is also accessed from the family room through yet another new sliding glass door. The bedrooms are smartly placed upstairs. The roomy master bedroom has a large walk-in closet and an ensuite. This buyer-friendly home provides beautiful and nearly maintenance free landscaping within a natural environment and is complete with new insulated fiberglass garage and front entry doors, new soffit and new gutters with gutter guard. Call now! All data and information are approximate.

For more information, photos  
and virtual tour, please visit  
[www.chris-martin.ca](http://www.chris-martin.ca).

Home: 1,671 sq ft | Bedrooms: 3 | Baths: 3 | Taxes: 2,618



1-5140 Metral Drive,  
Nanaimo, BC V9T 2K8

Each office is independently  
owned & operated

This is not intended to  
solicit properties already  
listed for sale.



Additional photos, virtual tours and more at [www.chris-martin.ca](http://www.chris-martin.ca)

Cell (250) 616-1996 | Bus (250) 751-1223 | Fax (250) 751-1300

Email [chris@chris-martin.ca](mailto:chris@chris-martin.ca) | [www.chris-martin.ca](http://www.chris-martin.ca)

PERSONAL REAL ESTATE CORPORATION

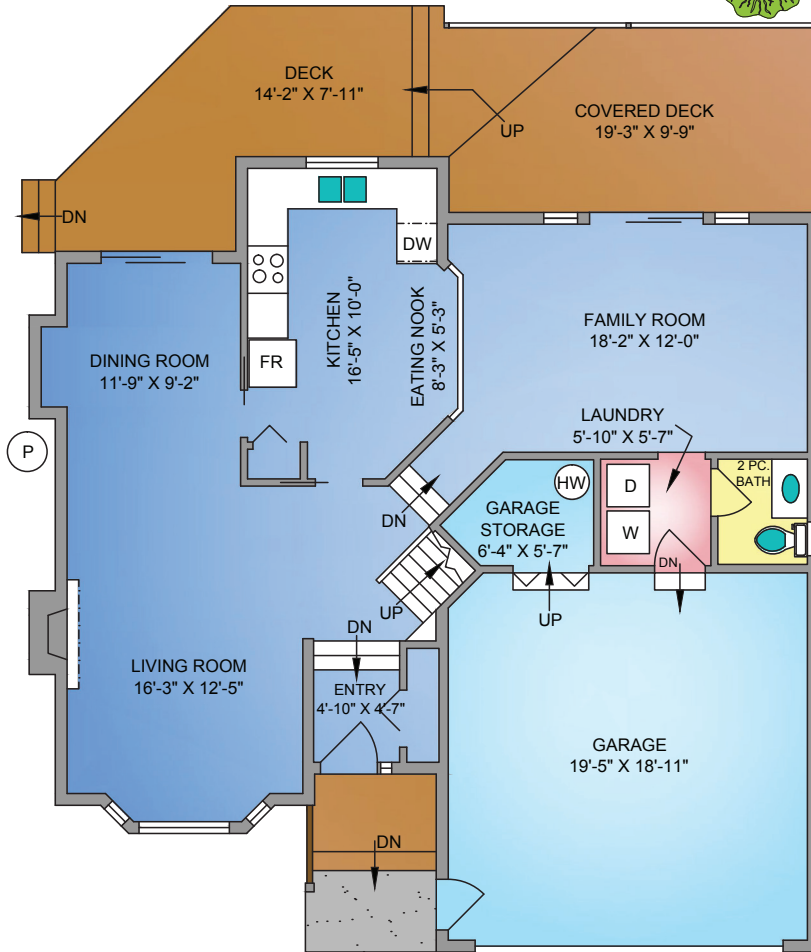


# Floor Plan

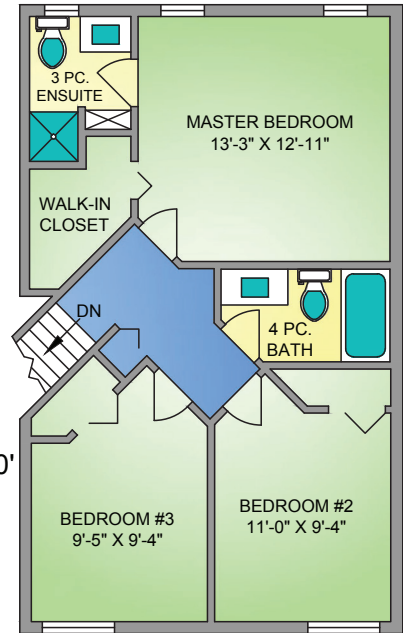
\$384,900.  
380 Summit Drive



## MAIN FLOOR 1004 SQ. FT.



## UPPER FLOOR 667 SQ. FT.



NORTH



0' 5' 10'  
SCALE



250.616.2482  
PROPER MEASURE™ MID ISLAND  
propermeasuremidisland.com

FLOOR	AREA (SQ. FT.)		
	FINISHED	GARAGE	DECK / PATIO
MAIN	1004	435	357
UPPER	667	0	0
<b>TOTAL</b>	<b>1671</b>	<b>435</b>	<b>357</b>



1-5140 Metral Drive,  
Nanaimo, BC V9T 2K8

Each office is independently  
owned & operated

This is not intended to  
solicit properties already  
listed for sale.



Additional photos, virtual tours and more at [www.chris-martin.ca](http://www.chris-martin.ca)  
Cell (250) 616-1996 | Bus (250) 751-1223 | Fax (250) 751-1300  
Email [chris@chris-martin.ca](mailto:chris@chris-martin.ca) | [www.chris-martin.ca](http://www.chris-martin.ca)

PERSONAL REAL ESTATE CORPORATION

