

Classic Cape Cod Home! One Bedroom Suite!

\$464,900
1514 Wilson Road

Virtual Tours
Photos &
More at
chris-martin.ca



**HURRY!
ACT NOW!**



Welcome home to this classic Cape Cod style home boasting fantastic curb appeal complete with mature landscaping, fruit trees and an enormous front verandah. There are beautiful wood sash windows, three upper dormer windows and a lovely brick fascia. The next lucky owner will also enjoy the large .23 acre lot, an enormous rear balcony with arbour, abundant RV parking and a two vehicle carport. This 3,031 Sq Ft main level entry home, with a walk-out basement, is located on a no-through road and provides a quality one bedroom suite with private entry. The main level boasts hard wood and travertine tile floors, a spacious living room with a brick fireplace / heatilator and a formal dining room. The kitchen has many oak cabinets, a tile backsplash, a herb window, stainless steel appliances and an eating nook with balcony access for meals al fresco. The king-sized master bedroom, a five piece bathroom and the laundry area are also found on the main level. The upper

level presents three additional bedrooms with much storage, high-end laminate flooring and a four piece bathroom. This fantastic home also provides an in-house work shop, economical forced air furnace with wood supplement, thermal windows, French doors, a concrete rear patio, an oversized exterior shed, raised flower beds and space for even the largest vegetable garden. Hurry, this very special home will sell quickly. Call now! All data and measurements are approximate and should be verified.

Home: 3,031 SqFt | Bedrooms: 5 | Baths: 3 | Taxes: \$3,111 (Before grant)

For more information, photos and virtual tour,
please visit www.chris-martin.ca.

RE/MAX
OF NANAIMO

1-5140 Metral Drive,
Nanaimo, BC V9T 2K8

Each office is independently
owned & operated

This is not intended to
solicit properties already
listed for sale.

CHRISMARTIN
A name to remember!

Additional photos, virtual tours and more at www.chris-martin.ca
Cell (250) 616-1996 | Bus (250) 751-1223 | Fax (250) 751-1300
Email chris@chris-martin.ca | www.chris-martin.ca

PERSONAL REAL ESTATE CORPORATION

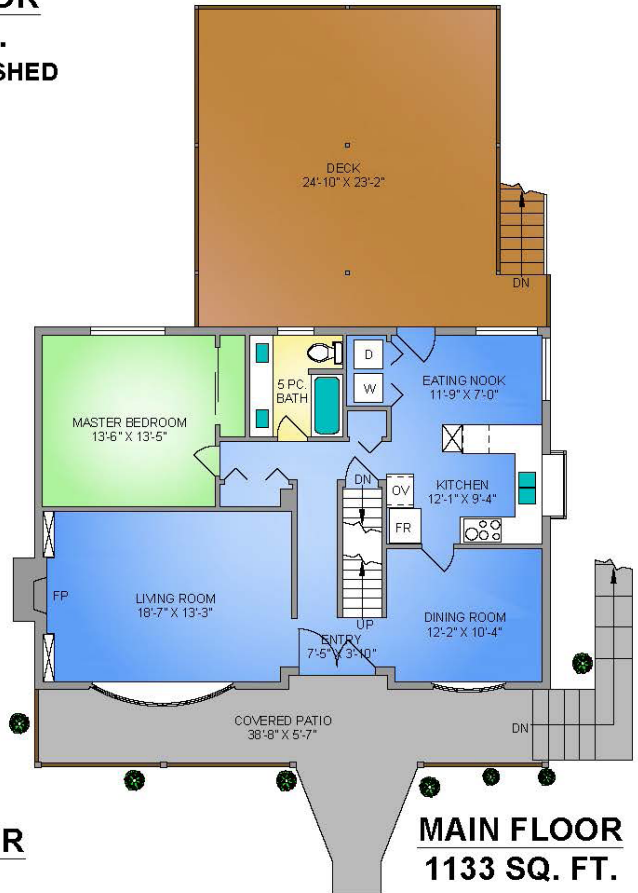
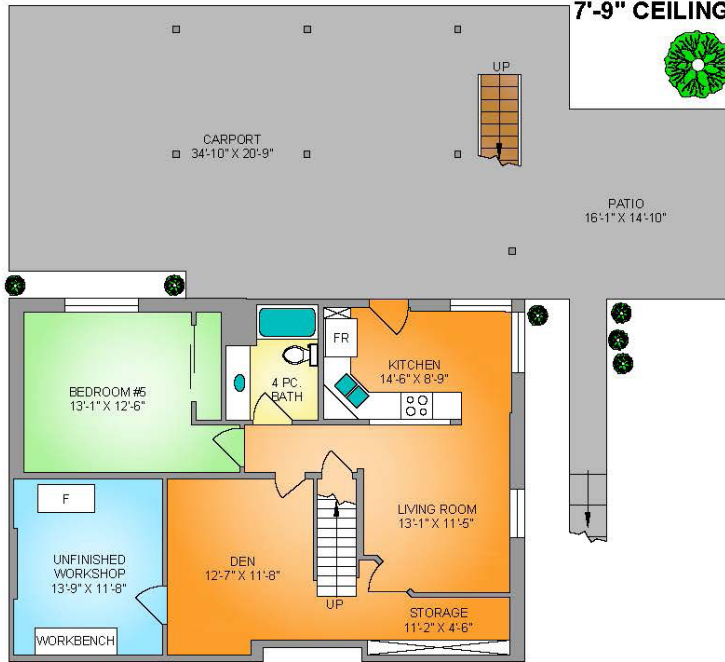


Floor Plan

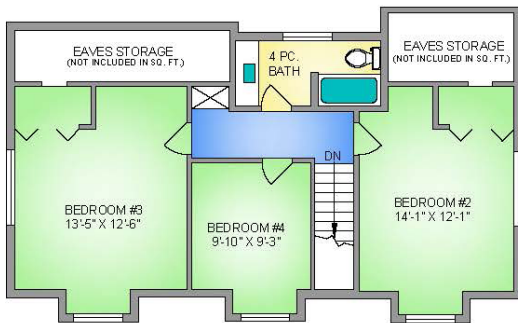
\$464,900
1514 Wilson Road

250-616-2482
PROPER MEASURE™ MID ISLAND
propermeasure.com
midisland@propermeasure.com

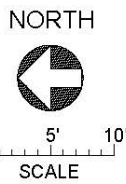
LOWER FLOOR 962 SQ. FT. 172 SQ.FT. UNFINISHED 7'-9" CEILING



UPPER FLOOR 764 SQ. FT.



MAIN FLOOR 1133 SQ. FT.



1514 WILSON ROAD
APRIL 14, 2017

Prepared by PROPER MEASURE MID ISLAND for the exclusive use of CHRIS MARTIN PREC
Plans may not be 100% accurate. Buyer must verify any critical measurement.
Private resale or modification of floor plans to a third party by any individual or entity other than Proper Measure Mid Island is strictly prohibited.

FLOOR	AREA (SQ. FT.)		
	FINISHED	UNFINISHED	DECK / PATIO
MAIN	1133	-	593
UPPER	764	-	-
LOWER	962	172	238
TOTAL	2859	172	831



1-5140 Metral Drive,
Nanaimo, BC V9T 2K8

Each office is independently
owned & operated

This is not intended to
solicit properties already
listed for sale.



Additional photos, virtual tours and more at www.chris-martin.ca
Cell (250) 616-1996 | Bus (250) 751-1223 | Fax (250) 751-1300
Email chris@chris-martin.ca | www.chris-martin.ca

PERSONAL REAL ESTATE CORPORATION

